



# THE MAINE PHILATELIST



Volume 40, Number 3

Winter 2008

Whole #150

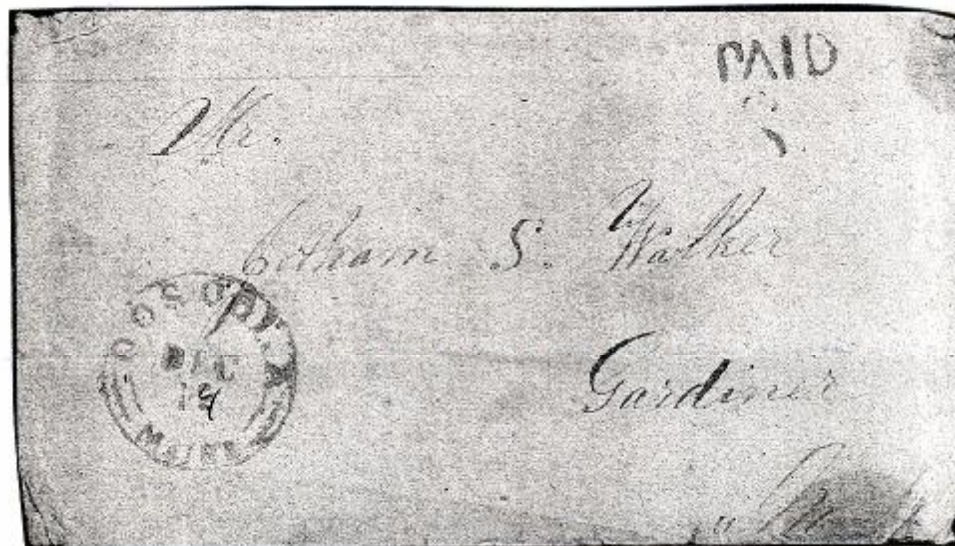
By Max Lynds  
President

## Staying warm



**This Winter 2008 Edition** comes as some really cold weather has hit us in Maine. As I put the finishing touches to this edition it is 20 below outside. For those of us in Maine this cool weather makes for great stamp collecting weather. Our Cover of the Quarter is back and we have a great article on Identifying the 37¢ U.S. Flag Stamps.

### MAINE COVER OF THE QUARTER



The above cover features a tough to find Oosoola, Maine cancellation. The Oosoola post office existed only from 1849 to 1856 and has a scarcity rating of 7. Oosoola would today be part of the Town of Norridgewock. (If you have an interesting, out of the ordinary, unusual, or scarce Maine cover candidate for *Maine Cover of the Quarter*, please send a photocopy of your cover against a black background to Rob Washburn, P.O. Box 840, Skowhegan, Maine 04976.)

Latest show information is on the web at:  
[http://www.maxlynds.com/mps\\_shows.htm](http://www.maxlynds.com/mps_shows.htm)

Winter

The Maine Philatelist is published quarterly by the

Maine Philatelic Society

Website <http://www.maxlynds.com/mps.htm>

The purpose of the Society is to promote philately in the Pine Tree State. Membership is open to everyone. Please send your name and address to the Secretary listed below along with \$5.00 dues for a year. Life memberships are not available at this time but you may prepay for as many years as you wish.

Officers

President

Max Lynds  
P.O. Box 761  
Houlton, ME 04730-0761  
[email:max@pwless.net](mailto:email:max@pwless.net)

Vice-President

Bruce Hazleton  
P.O. Box 67A  
Cumberland Center, ME 04021

Secretary

Dr. George W. Bostwick  
155 Moodys Island Road  
Nobleboro, ME 04555-9512  
[email:bostwick@midmaine.com](mailto:email:bostwick@midmaine.com)

Treasurer

Rick Stambaugh  
18 Elmwood Ct.  
N.Berwick, ME 03906  
[email:rstambaugh@maine.rr.com](mailto:email:rstambaugh@maine.rr.com)

Board of Directors

John Engle, M.D. , Waterville  
[email: johnengle@mac.com](mailto:email:johnengle@mac.com)

Dan Goodwin, N. Berwick  
[email: dgoodwi3@maine.rr.com](mailto:email:dgoodwi3@maine.rr.com)

Donald Hunt, Owl's Head

Daniel Lapointe, Van Buren

Paul Romanelli, Houlton

James Violette, Nobleboro  
[email: jviolett@tidewater.net](mailto:email:jviolett@tidewater.net)

Maine Stamp Club Meetings



WATERVILLE STAMP CLUB

The club meets on the first and third Friday from September to May and on the third Friday only during June, July and August. Meetings are from 6:30 to 9 p.m. at the Kennebec Valley Technical College (KVTC) on Western Avenue in Fairfield (Exit 35 of Interstate 95). For information, call 872- 5107. Non-members are invited to attend.

YORK COUNTY STAMP CLUB

The club meets on the second and fourth Thursday of each month beginning at 7:30 p.m. at the Sanford Masonic Hall, Elm Street, Sanford. Usual events include raffle, auction, presentations, refreshments, and an occasional visit from a stamp dealer. Dues are \$5 per year. For information, contact Secretary Tracey Levasseur, 329 Ross Comer Rd., Shapleigh, ME 04076.

UNION RIVER STAMP CLUB

The club meets from April to November on the third Thursday of the month starting at 6:00 p.m. at the Ellsworth Library. Typical events include an auction, a raffle, presentations and an opportunity to purchase from a member stamp dealer. Non-members are welcome. For further information, contact Eric Beal, 827-2686, [Eric.Beal@umit.maine.edu](mailto:Eric.Beal@umit.maine.edu)

KENNEBEC VALLEY STAMP AND COLLECTOR CLUB

The Kennebec Valley Stamp and Collector Club meetings are held the 1st and 3rd Tuesdays of from September thru June at the Central Maine Power Co. main office in Augusta. The time of the meeting is 6:30 PM to 8:30 PM. Contact Shirley McKay, 622-7978 or [kildonan@prexar.com](mailto:kildonan@prexar.com)

Please send your articles, scans, stories, comments, suggestions or questions to Max Lynds at the address listed on the left.

## Identifying the 37¢ U.S. Flag Stamps

By Rick Stambaugh

If you're like me, you put all stamps received in the mail into a baggy to later soak and sort. But, I rarely get around to soaking. So, I accumulate a lot of baggies full of U.S. stamps on paper. When an article or stamp club program catches my interest, I go through the baggies pulling out the related stamps and finally soak, sort, and mount them.

The 37¢ U.S. flag stamps, Figures 1A and 1B, intrigued me because "Linn's Stamp News" published several articles identifying the latest issues and varieties. I cut out each article and saved it, for later use, in identifying my accumulation. I also cut out and saved the Mystic Stamp Co. back page full-color advertisements in Lynn's that showed 20 different 37¢ flag stamps with some identifying information.

Armed with the articles and ads, I was determined to sort, identify and mount my 37¢ flag stamps. I soaked nearly 300 stamps and started trying to identify each one. I quickly became frustrated and stopped. Although the articles and ads provided some of the identifying characteristics of the stamps, they didn't provide a systematic approach. So, I developed a Decision Tree that allows one to apply a series of questions to identify the stamps.

There are two advantages in using this Decision Tree. First, is that a minimum number of stamp characteristics need to be determined to identify each stamp. Although there are nine possible identifying characteristics, many stamps can be identified by only four or five characteristics. Second, the Decision Tree establishes a logical easy-to-use process for sorting a pile of flag stamps. A modern perforation gauge and a magnifying glass (or young eyes) are all that are required to use the Decision Tree.

The nine possible stamp-identifying characteristics are:

1. Is the stamp non-denominated (i.e. "First Class" without a price, Figure 1A) or denominated with "37" (Figure 1B)?
2. Is the stamp a coil stamp (i.e. with two parallel flat sides)?
3. What year date is on the bottom left side of the stamp margin (2002, 2003, 2004, or 2005)?
4. Is the year date in tall or short font? (The difference is obvious when comparing a few stamps, but hard to show with my imaging capability.)
5. Is the stamp perforated (water activated) or die-cut (self adhesive)?
6. What is the perforation or die-cut measurement using a perforation gauge?
7. Is there micro-printing in the top red stripe: USPS at top of the stripe or USA at the bottom?
8. Is there an obvious color variation (Some have clearly darker red stripes.)?
9. Does the serrated die-cut start and end with a peak? The first and last full height or depth die-cut serrations at the top of a stamp are called peaks (full height) or valleys (full depth). Figure 2 shows a peak to peak (P/P) configuration on a booklet stamp, and Figure 3 shows a peak to valley (P/V) configuration on a coil stamp.

The Decision Tree consists of three different charts. Chart 1 identifies only non-denominated ("First Class") stamps, and refers to charts 2 and 3 for denominated stamps ("37"). If the stamp is denominated with 37, use chart 2 for coil stamps, and chart 3 for non-coils (i.e. booklet and sheet stamps). When sorting a pile of stamps, the three charts establish the initial sorting step. First, sort the stamps based on the charts, i.e. one pile for non-denominational, a second pile for coils with 37, and a third for non-coils with 37. After that first sorting, the two denominated 37 stamp piles can be further sorted by year dates. This sorting can result in making 8 piles from the two denominated 37 stamp piles.

**Identifying the 37¢ U.S. Flag Stamps**

With the initial sorting done, the stamps in each pile can now be identified by following the arrows at each decision point (question) on the appropriate chart. Example identification for some non-denominated stamps using Chart 1 would go as follows:

- Is it perforated or Die-Cut? If it is perforated it is Scott No. 3620.
- If it is Die-Cut, is it a coil stamp, yes or no? If yes, it is Scott No. 3622.
- If it is not a coil stamp, is the 2002 Tall or Short?
- If the 2002 is Tall, does the perforation measure 8? If yes, it is Scott No. 3625.



Figure 1A



Figure 1B

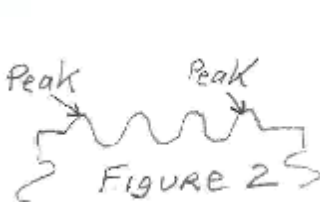


FIGURE 2

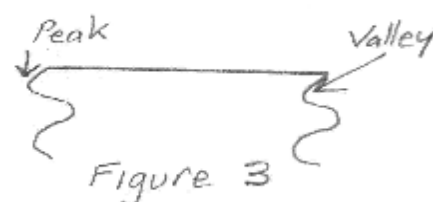


Figure 3

Chart 1, Decision Tree for Non-Denominated 37 cent Flag Stamps

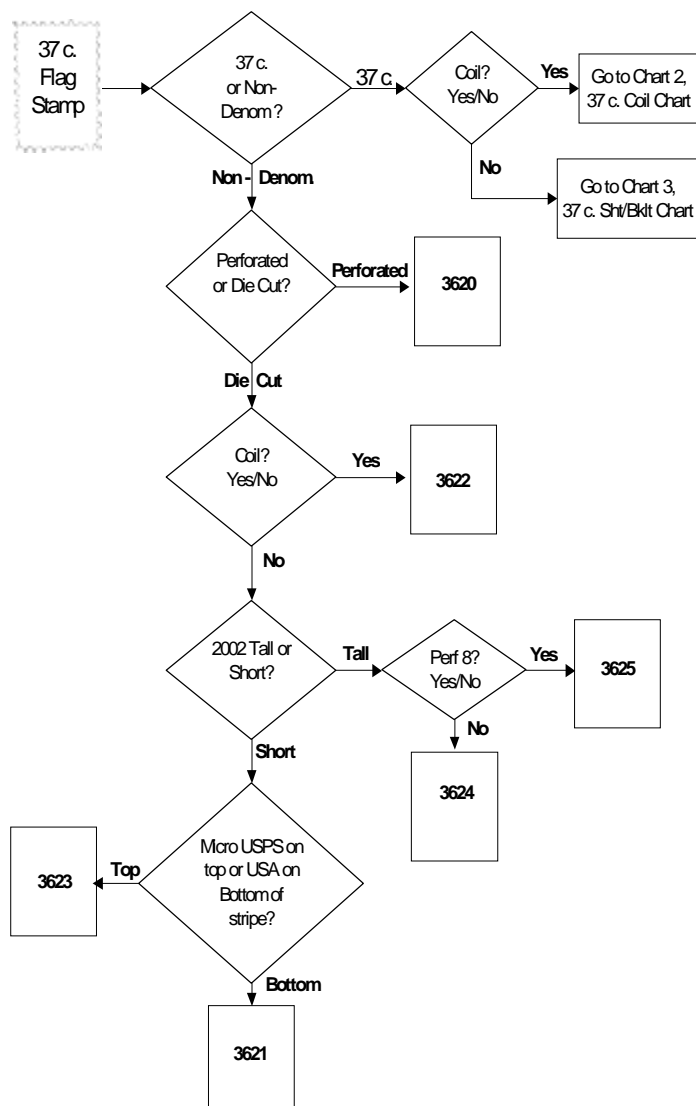
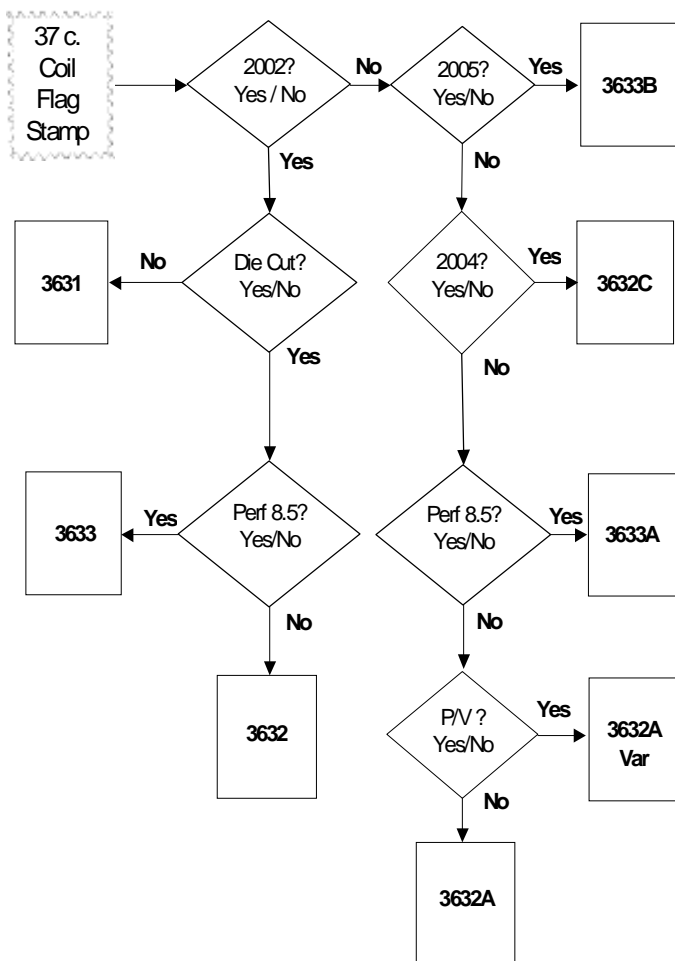
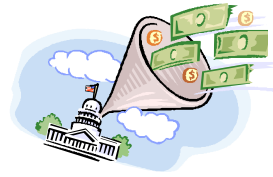
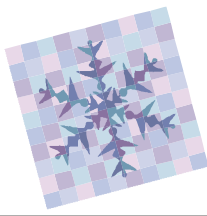


Chart 2, Decision Tree to Identify 37 cent Coil Flag Stamps

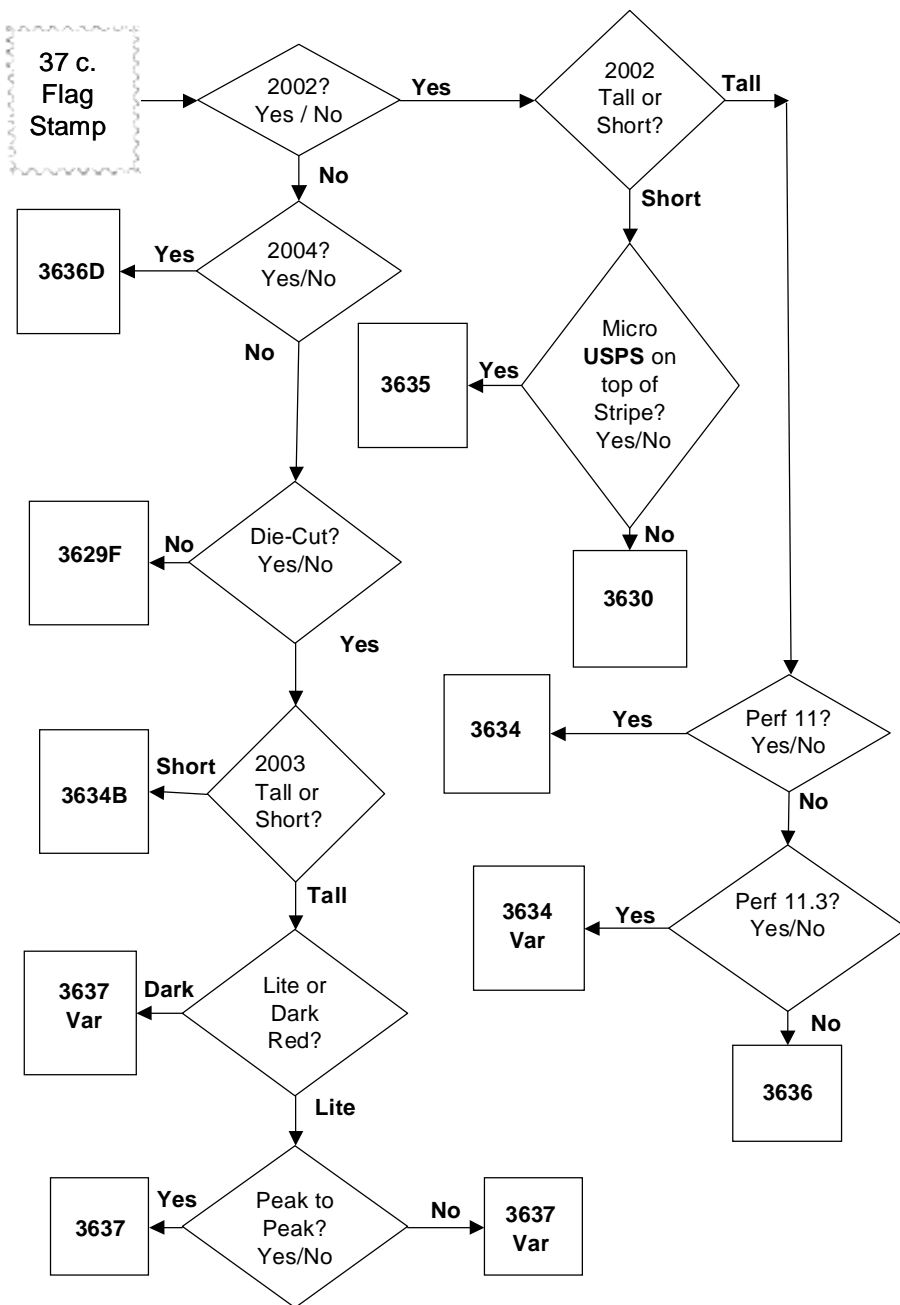




**Identifying the 37¢ U.S. Flag Stamps**

When I first applied the charts to my accumulation, I found that I had 16 different stamps. The Mystic Stamp Co. ad offered “all the U.S. Flag Rate-Change Stamps”. So, I sent for “all” the stamps to complete my collection. When I applied the charts to the 20 stamps that arrived from Mystic, I found that they didn’t send “all”, because after combining the 20 stamps Mystic sent with my own accumulation, I now had 24 different stamps. Since then another Linn’s article has identified another variety. So, I updated my decision charts to show 25 possible 37 cent Flag Stamps.

**Chart 3, Decision Tree to Identify 37 cent Non-Coil Flag Stamps**



Copyright USPS 2007

On February 21, 2008, in Hawthorne, Florida, the Postal Service™ will issue a 41-cent, *Marjorie Kinnan Rawlings* commemorative stamp in one design in a pressure-sensitive adhesive (PSA) pane of 20 stamps (Item 462300). Designed by Carl T. Herrman of Carlsbad, California, the stamp goes on sale nationwide February 21, 2008. With this 24th stamp in the *Literary Arts* series, the Postal Service commemorates author Marjorie Kinnan Rawlings (1896–1953). Best known for her novel *The Yearling* and her memoir *Cross Creek*, Rawlings is remembered for a series of short stories, novels, and works of nonfiction about life in the Florida backwoods. The stamp will be dedicated on the grounds of Rawlings’ home in Cross Creek, now a state of Florida historic park. In the foreground of the stamp art is a portrait of Marjorie Kinnan Rawlings based on an undated photograph. The background depicts a fawn at a watering hole in the Florida scrub country. The rows of spots on the fawn, which are consistent with descriptions in *The Yearling*, indicate that the fawn is a young male.



### MAINEPEX 2007

The fall show held this past November 10 in Portland was well attended. The York Club sponsored the exhibits and the frames were full as usual. The dealers in attendance had their chairs full with customers all day and at times those wishing to look through available items had to wait for a spot to open up at a table. Pine Tree Stamps again provided refreshments for all. I noticed at this show and the show in Winslow in October many faces that were unfamiliar. Hopefully this is a sign of a resurgence in our hobby.



York Club members, Dan Goodwin and Rick Stambaugh, setting up exhibits



Searching for those stamps and covers



Grabbing some refreshments provided by Pine Tree Stamps



The room was full of buyers and exhibit viewers

**SHOW SCHEDULE**

**STAMP SHOW & AUCTION**

**Sponsored by:**  
Waterville Stamp Club

**Stamps**  
**Giant Board & Oral Auction**  
**Postcards & Covers**  
**50/50 Drawing**

**9:00 AM to 3:30 PM**  
**Saturday April 19, 2008**

**Table Auction closes 12:30**  
**Oral Auction starts 12:45**

**Location**

**MacCrillis-Rousseau VFW**  
**175 Veteran Drive**  
**Winslow, Maine**

**Information**

**John Engle**  
**johnengle@mac.com**

**KENNEBEC VALLEY STAMP  
And COLLECTOR CLUB**

**2008 SHOW**

**Stamps**  
**Coins**  
**Postcards**  
**Paper Ephemera**

**Coffee and Lunch**

**9:00 AM-4:00 PM**

**Saturday, March 15, 2008**

**Location**

**Elk's Lodge**  
**Civic Center Drive, Rte 27 (Belgrade Rd.)**  
**8/10 Mile North of I-95**  
**Exit 112 from North or 112b from South**

**Information**

**Shirley MacKay, Pres KVSC Club**  
**Kildonan@verizon.net**

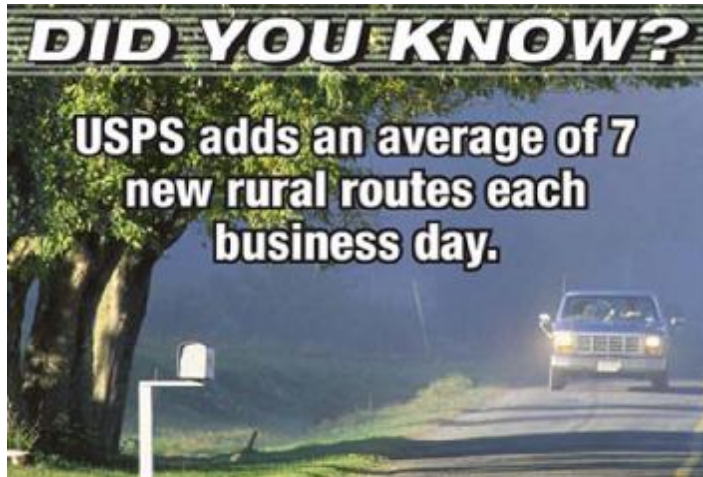
**Greater Nashua Stamp Show**

**Holiday Inn**  
**9 Northeastern Blvd**  
**Nashua, NH**

**9:00 AM-3:00 PM**  
**March 16**  
**April 20**

**Information:**  
**ptstamps@megalink.net**

Ads- Member ads will be run as space allows. Commercial ads will be \$15.00 for a quarter page and \$25.00 per half page per issue.





George Bostwick  
Maine Philatelic Society  
115 Moody Island Road  
Nobleboro, ME 04555-9512

Please mail to :

Dues are \$ 5.00 per year. July to July

e-mail \_\_\_\_\_

Name \_\_\_\_\_  
Address \_\_\_\_\_  
City \_\_\_\_\_

State \_\_\_\_\_  
ZIP \_\_\_\_\_

Please accept my membership application to the Maine Philatelic Society:

Membership Application



Maine Philatelic Society  
P.O. Box 761  
Houlton, ME 04730

TO: