



# THE MAINE PHILATELIST

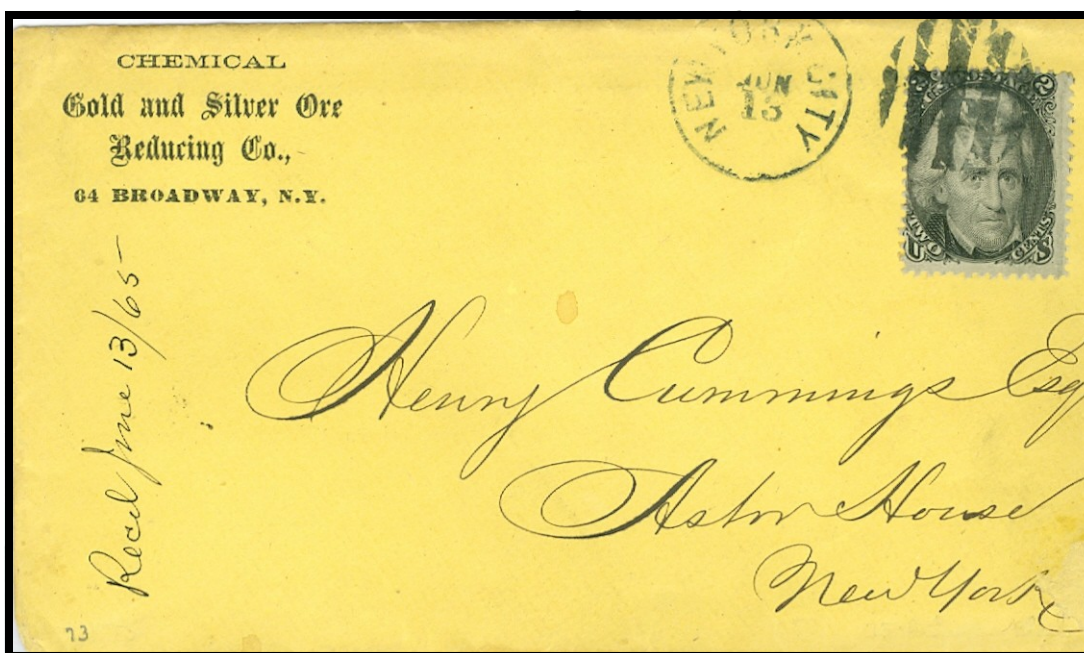


Volume 43, Number 3

SPRING 2011

Whole # 157

Max Lynds, President



Back in 1865 when this cover was mailed the average price of gold was \$ 20.65 an ounce. Silver was traded at 1.89 per ounce. The official U.S. Government gold price has changed only four times from 1792 to the present. Starting at \$19.75 per troy ounce, raised to \$20.67 in 1834, and \$35 in 1934. In 1972, the price was raised to \$38 and then to \$42.22 in 1973. A two-tiered pricing system was created in 1968, and the market price for gold has been free to fluctuate since then.

For the latest gold and silver prices check out [www.kitco.com](http://www.kitco.com)



Latest show information is on the web at:  
[http://www.maxlynds.com/mps\\_shows.htm](http://www.maxlynds.com/mps_shows.htm)

Take a look at the Member Page– Past issues and updates  
[http://www.maxlynds.com/member\\_page.htm](http://www.maxlynds.com/member_page.htm)



The Maine Philatelist is published quarterly by the

**Maine Philatelic Society**

Website <http://www.maxlynds.com/mps.htm>

The purpose of the Society is to promote philately in the Pine Tree State. Membership is open to everyone. Please send your name and address to the Secretary listed below along with \$10.00 dues for a year. Life memberships are not available at this time but you may prepay for as many years as you wish.

**Officers**

**President**

Max Lynds  
P.O. Box 761  
Houlton, ME 04730-0761  
[email:max@pwless.net](mailto:email:max@pwless.net)

**Vice-President**

Bruce Hazleton  
P.O. Box 67A  
Cumberland Center, ME 04021

**Secretary**

Dr. George W. Bostwick  
155 Moodys Island Road  
Nobleboro, ME 04555-9512  
[email:bostwick@midmaine.com](mailto:email:bostwick@midmaine.com)

**Treasurer**

Rick Stambaugh  
18 Elmwood Ct.  
N.Berwick, ME 03906  
[email:rstambugh@maine.rr.com](mailto:email:rstambugh@maine.rr.com)

**Board of Directors**

John Engle, M.D. , Waterville  
[email: johnengle@mac.com](mailto:email:johnengle@mac.com)

Dan Goodwin, N. Berwick  
[email: dgoodwi3@maine.rr.com](mailto:email:dgoodwi3@maine.rr.com)

Donald Hunt, Owl's Head

Daniel Lapointe, Van Buren

Paul Romanelli, Houlton

**Maine Stamp Club Meetings**



**WATERVILLE STAMP CLUB**

The club meets on the first and third Friday from September to May and on the third Friday only during June, July and August. Meetings are from 6:30 to 9 PM at the Kennebec Valley Technical College (KVTC) on Western Avenue in Fairfield (Exit 35 of Interstate 95). For information, call Jake Ward, 872- 5107, [xc-ski-nut@msn.com](mailto:xc-ski-nut@msn.com). Non-members are invited to attend.

**YORK COUNTY STAMP CLUB**

The club meets on the second and fourth Thursday of each month beginning at 7:30 PM at the Sanford Masonic Hall, Elm St, Sanford. Usual events include raffle, auction, presentations, refreshments, and an occasional visit from a stamp dealer. Dues are \$10 per year. For information, contact Secretary Tracey Levasseur, 329 Ross Comer Rd., Shapleigh, ME 04076.

**UNION RIVER STAMP CLUB**

The club meets from April to November on the third Thursday of the month starting at 6:00 PM at the Ellsworth Church of the Nazarene . Typical events include an auction, a raffle, presentations and an opportunity to purchase from a member stamp dealer. Non-members are welcome. For further information on location contact Eric Beal, 827-2686, [Eric.Beal@umit.maine.edu](mailto:Eric.Beal@umit.maine.edu)

**KENNEBEC VALLEY STAMP AND COLLECTOR CLUB**

The Kennebec Valley Stamp and Collector Club meetings are held the 1st Tuesday of the month from September thru June at Central Maine Power Co., 83 Edison Dr., Augusta. The time of the meeting is 6:30 PM to 8:30 PM. Contact Rich Howard, 621-0882 or [richhoward@gwi.net](mailto:richhoward@gwi.net)

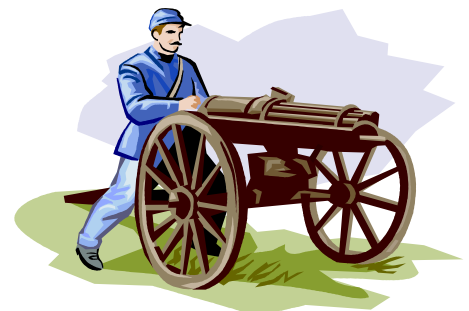
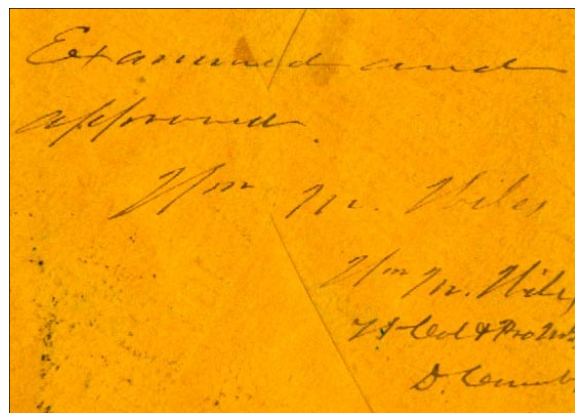
Please send your articles, scans, stories, comments, suggestions or questions to Max Lynds at the address listed on the left.

Civil War  
Per Flag of Truce

Flag of truce routes across military lines were established for military communications between the warring parties, for the return of released prisoners of war, and for the exchange of mail to and from P.O.W.'s.



This cover was sent by flag of truce from CSA Territory to Union occupied New Orleans via Nashville.



Censor Marking on back of cover applied by: Lt. Col. William M. Wiles (Provost Marshall)

This invoice from E. Merritt & Sons with a R15c revenue stamp was for product sold to the Cary Bros. The Cary Bros were large logging operators in northern Maine and western New Brunswick. This product would have been for their woods crews.



Houlton, Me. *Nov* 1869.

*Messrs Cary Bros*  
Bought of **E. MERRITT & SONS.**

Dealers In

Fresh and Corned Beef, Pork, Hams,  
Mutton, Lard, and Country Produce.  
HARD AND SOFT SOAP, ALWAYS ON HAND.

*For Mill House*

<i>Oct</i>	1	32	Corned Beef	10	320
	7		Lamb	10	70
	8	15 <sup>1</sup> / <sub>4</sub>	Beef	7	107
	12	39 <sup>1</sup> / <sub>2</sub>	Corned Beef	10	395
	14	10 <sup>3</sup> / <sub>8</sub>	Lamb	10	106
	18	13 <sup>1</sup> / <sub>2</sub>	Lamb	9	122
			Onions		70
	20	14 <sup>1</sup> / <sub>8</sub>	Lamb	8	113
	22	4 <sup>1</sup> / <sub>4</sub>	Butter	35	149
	23	46 <sup>1</sup> / <sub>2</sub>	Pork	20	930
	29	9	Lamb	8	72
<i>Nov</i>	4	14 <sup>3</sup> / <sub>4</sub>	Lamb	8	118
		12 <sup>3</sup> / <sub>4</sub>	Boast	10	128
	5	19	Corned Beef	10	190
	11	8	Lamb	8	67
		6 <sup>1</sup> / <sub>4</sub>	Lamb	10	53
	15	48	Corned Beef	10	480
	17	17 <sup>1</sup> / <sub>2</sub>	Lamb	8	140
					<u>3627</u>

*Recd Cary*  
*E. Merritt & Sons*

*Chas*

## Vermont Cover Precanceled After being Affixed

By Rick Stambaugh

I got this cover, Fig 1, from Bruce Hazelton last month. This cover is unusual. It has a Northfield Vermont L-1 Handstamp precancel. But, this Northfield VT precancel type is cataloged as a type that is applied to a stamp before the stamp is affixed to the envelope, which is the usual way precanceled stamps are used. The catalog image for this precancel is shown in Fig 2. What makes this cover unusual is that the precancel was applied to the stamp after the stamp was affixed to the envelope. There is an Appendix in the Precancel Stamp Society's Town and Type Catalog (7<sup>th</sup> Ed) that lists towns and types where stamps were precanceled after being affixed (PAA). But, the PAA Appendix doesn't include precancel types that were usually applied before the stamp was affixed. The Northfield VT L-1 Handstamp precancel is listed in the normal listing; it is not included in the PAA Appendix.

This cover presents some questions: 1. Was the Northfield VTL-1 precancel used as both a normal precancel and sometimes also applied after affixing? or 2. Was the Northfield VT L-1 precancel always applied after being affixed?

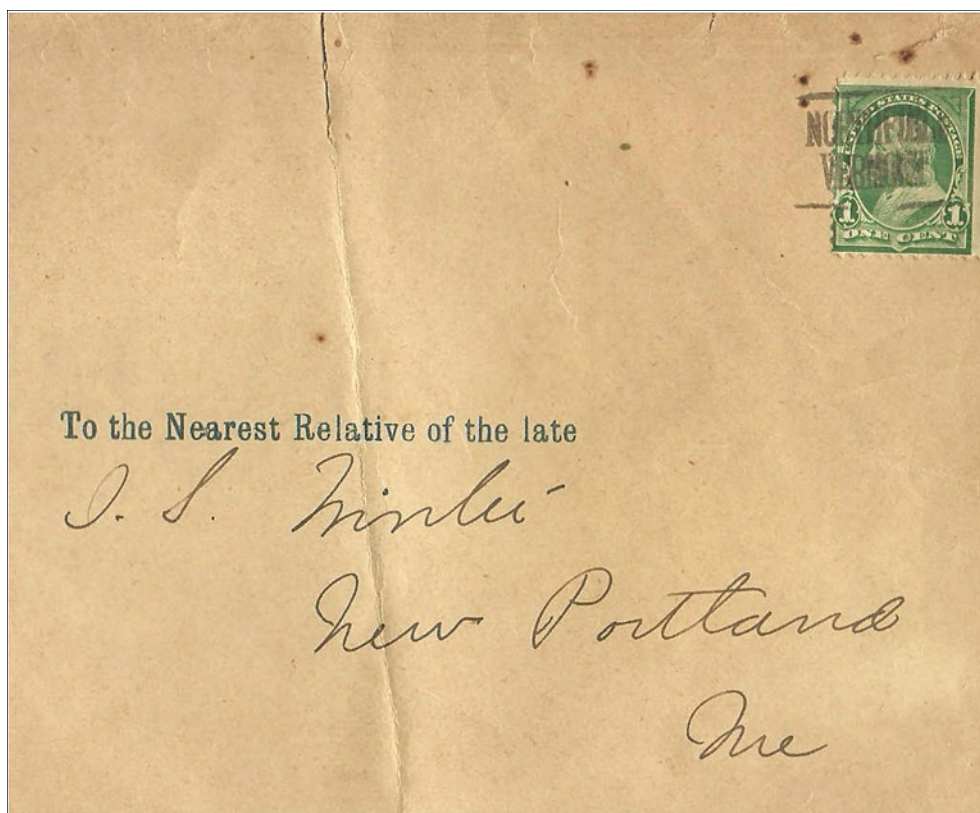


Figure 1

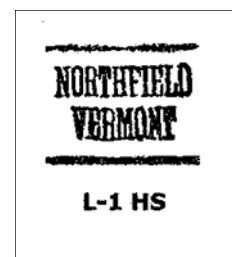


Figure 2

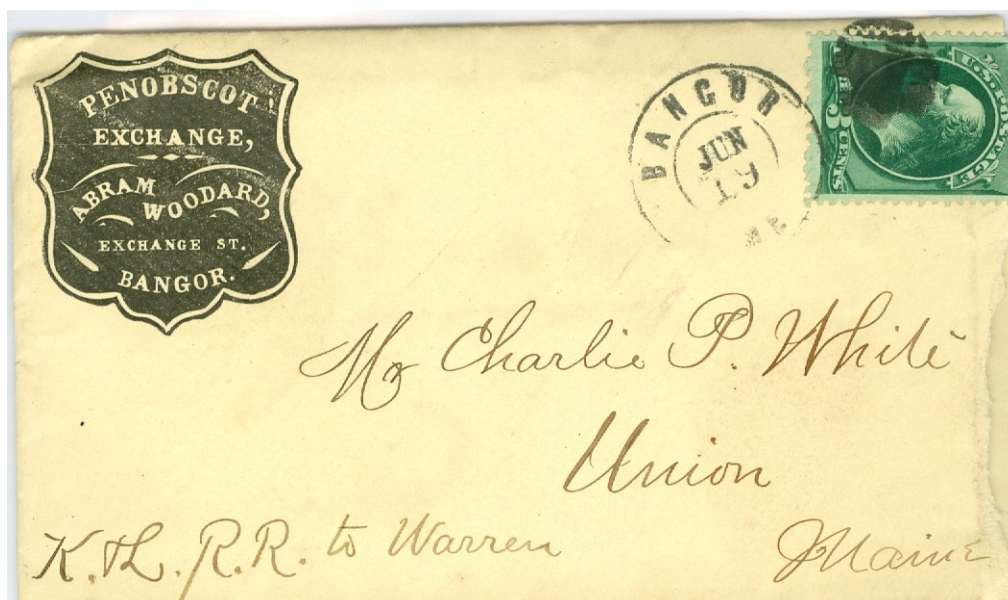
Almost the same....

Penobscot Exchange Coffee House  
Abram Woodard  
Bangor, Maine



Enclosed letter is dated February 8, 1863. 3 cent rate to Fort Fairfield.

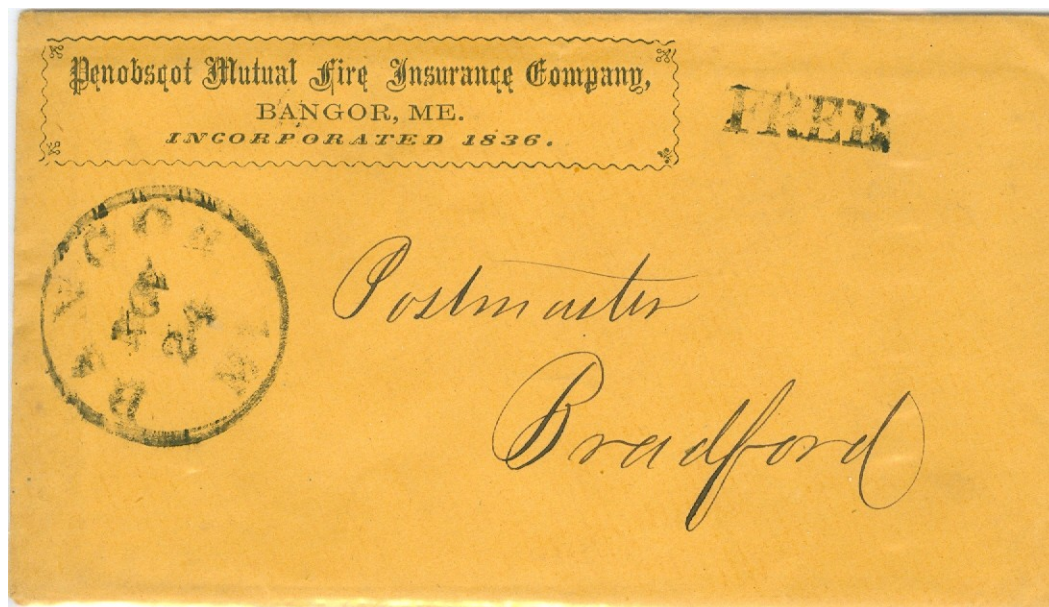
Penobscot Exchange  
Abram Woodard  
Bangor, Maine



Enclosed letter is dated June 18, 1874. 3 cent rate via railroad to Union.

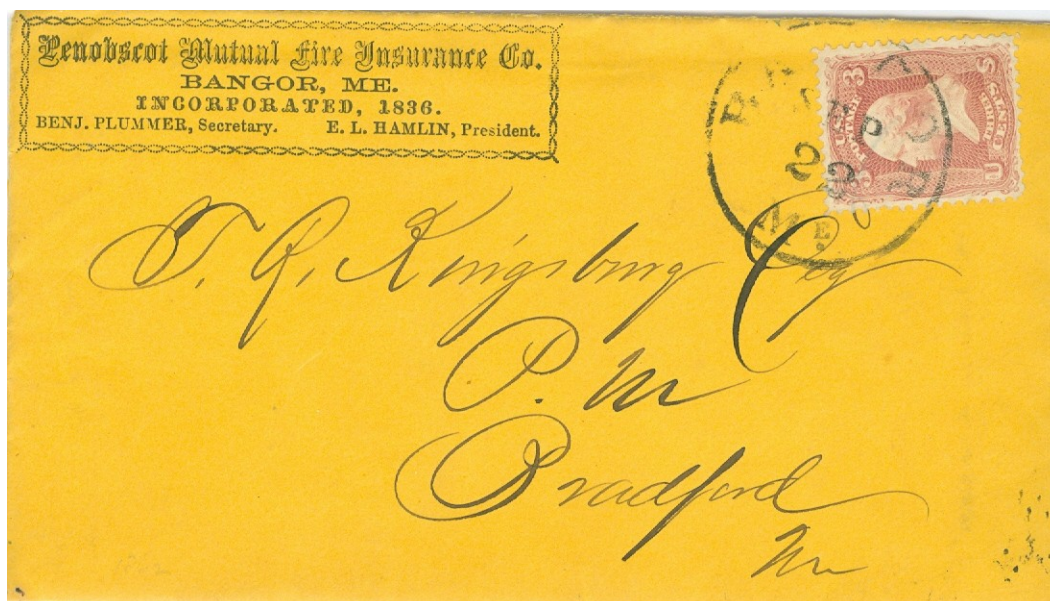
Almost the same....

Penobscot Mutual Fire Insurance Company  
Bangor, Me.



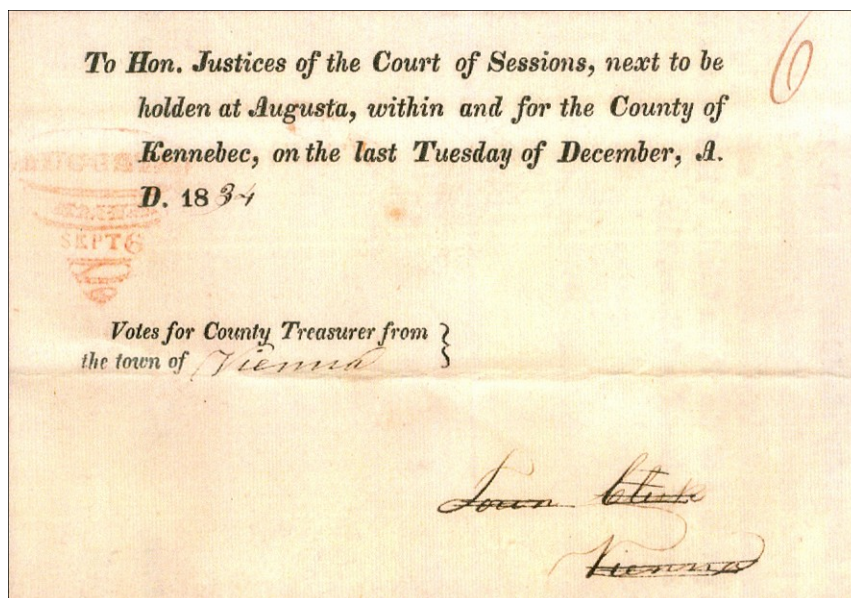
Enclosed letter is dated November 21, 1856. Free to Bradford Postmaster.

Penobscot Mutual Fire Insurance Company  
Bangor, Me.



Enclosed letter addressed to Mr. Kingsbury is dated July 26 and apologizes for the slow response and that many of the office staff have been on vacation. Looks like they came back in mid September. 3 cent rate to Bradford.

## *Maine Cover of the Quarter*



The above stampless cover features an Augusta, Maine “horn of plenty” cancel. The cover was sent by the Town of Vienna to the Kennebec County Court and contains Vienna’s voting totals for the election of the office of County Treasurer as certified on September 8, 1834.

If you have an unusual, scarce or interesting Maine cover for the Maine Cover of the quarter, please send a photocopy of your cover against a black background to:

**Rob Washburn,  
P.O. Box 840  
Skowhegan, ME 04976**

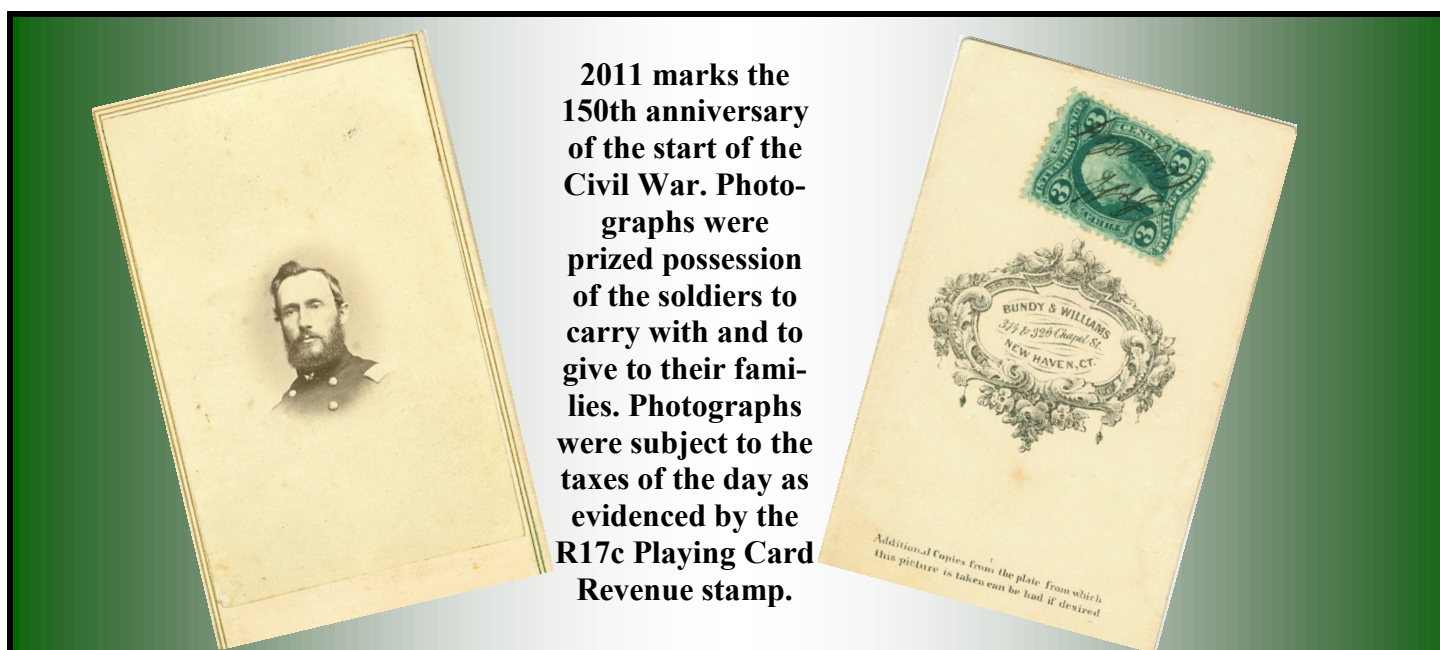
### Update to “The Post Offices of Maine Rarity Guide:

Member David D'Alessandris sent this cover from Charlotte, ME which is listed the MPS Guide as a R10. Check out his website <http://dalessandris.net/default.aspx> for some really nice postal history with many covers to and from Maine.

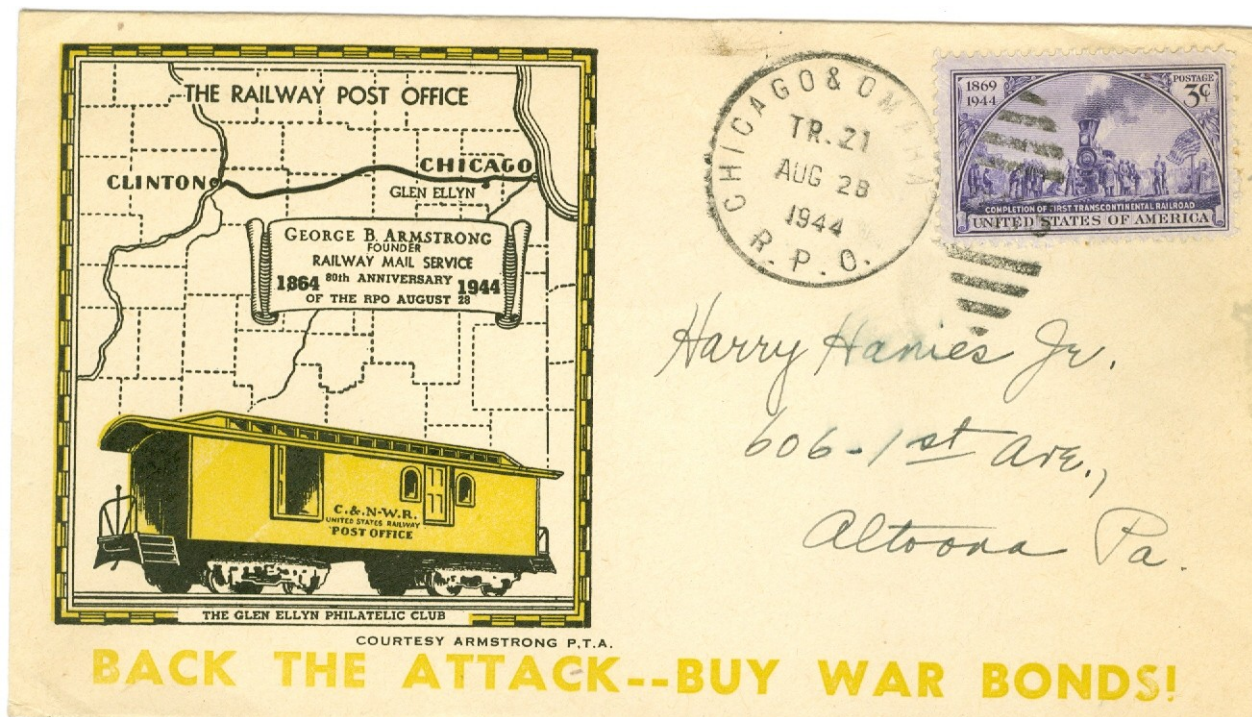


Charlotte, Maine (open July 27, 1904 to February 2, 1906), July 17, 1905, 2¢ carmine 1903, and 8¢ violet black 1902 pays the domestic rate and registry fee to Bridgeport, Connecticut.

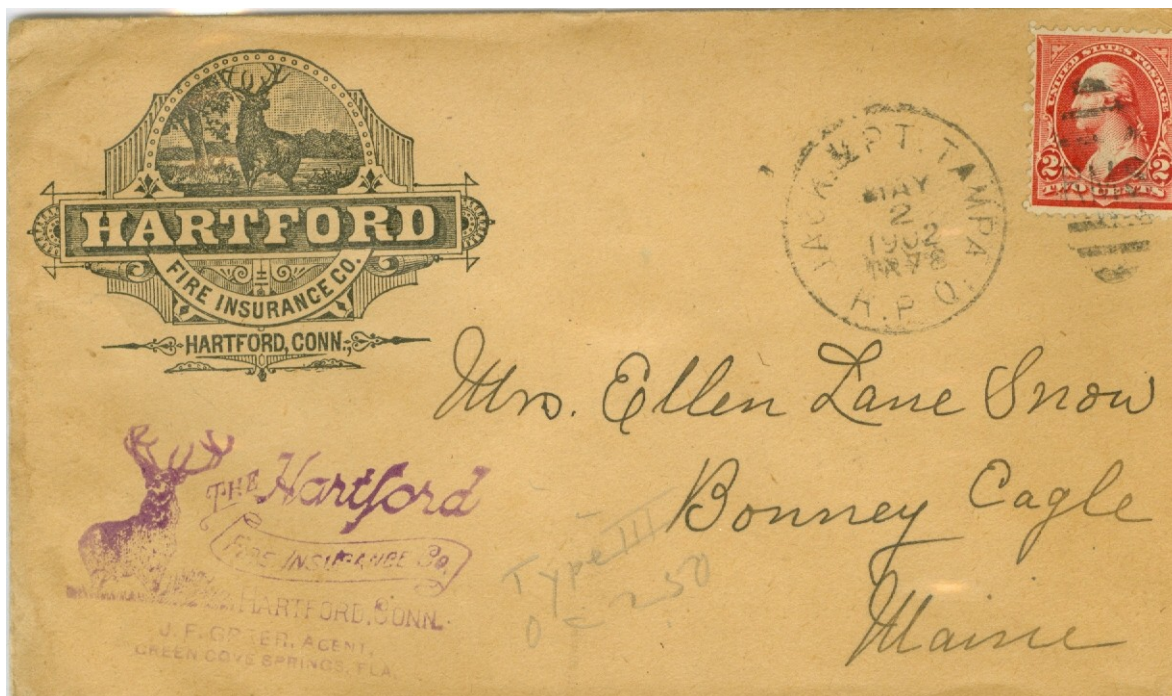
Charlotte is in Washington County and was also open earlier from December 10, 1832 to February 25, 1861 and again from July 2, 1861 to June 15, 1904



This month's Maine RPO'S



This commemorative CHICAGO & OMAHA RPO was also a WW II Patriotic urging the purchase of war bonds.



This insurance cover to Maine started from Florida on the JACK. & PT TAMPA route.

## SHOW SCHEDULE

### Waterville Stamp Club

Show and Auction  
MacCrillis-Rousseau VFW Hall  
175 Veterans Drive  
Winslow, ME  
April 16, 2011  
9:00 AM—3:30 PM

#### Dealers Bourse

Stamps  
Covers  
Postcards  
Supplies  
Auction

Information: [Ddogherty@yahoo.com](mailto:Ddogherty@yahoo.com)

### MAINEPEX 2011

November 12, 2011  
9:00 AM - 3:00 PM

Holiday Inn Portland-West  
Exit 48 - Maine Turnpike  
81 Riverside Street  
Portland, ME

#### Dealers Bourse

Stamps-Covers  
Postcards-Supplies  
Exhibits

Information: [max@pwless.net](mailto:max@pwless.net)

### Presque Isle Collectors Club

Coin and Stamp Show  
April 17, 2011  
9:00 AM - 3:00 PM  
Presque Isle Inn and Convention Center  
116 Main St,  
Presque Isle, ME 04769  
Contact Bim Finemore, 207-425-6606

### Brunswick Coin & Stamp Shows

May 1, Jul 10, Oct 02  
9:00am - 2:30pm  
Columbus Drive, Brunswick, Me. 04011  
FMI: Bob Caouette, 207-721-7872  
[caouette@Earthlink.net](mailto:caouette@Earthlink.net)

### Philatelic Show 2011

Northeast Federation of Stamp Clubs

April 29-May 01, 2011  
Fri 11 AM– 6 PM  
Sat 10 AM-5 PM  
Sun 10 AM-4 PM  
Holiday Inn  
Boxborough Woods  
I-495 & Rt. 111 (Exit 28)  
Boxborough, Massachusetts

[www.philatelicshow.org](http://www.philatelicshow.org)

### Greater Nashua Stamp Show

9:00 AM– 3:00 PM  
Holiday Inn  
Rt 3, Exit 4  
Nashua, NH

#### Portsmouth Show

9:00 AM– 3:00 PM  
Holiday Inn  
I-95 Traffic Circle  
Portsmouth, NH

Information:  
[Ptstamps@megalink.net](mailto:Ptstamps@megalink.net)  
207-966-2744



George Bostwick  
Maine Philatelic Society

Please mail to :

Dues are \$ 10.00 per year. July to July Paid \$ \_\_\_\_\_

e-mail \_\_\_\_\_

ZIP \_\_\_\_\_

City \_\_\_\_\_

Address \_\_\_\_\_

Ad- \_\_\_\_\_

Name \_\_\_\_\_

Please accept my membership/renewal application to the Maine Philatelic Society:

Membership Renewal Application

Spring 2011



Maine Philatelic Society  
P.O. Box 761  
Houlton, ME 04730

TO: